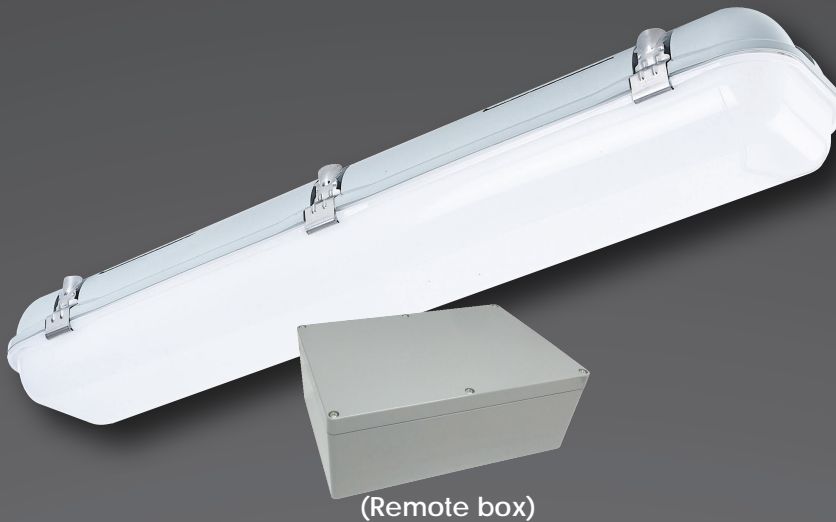


EXCALIBREWP^{RB}

**20W LED WEATHERPROOF IP65 IK10 BATTEN
EMERGENCY LIGHT FOR FREEZER APPLICATION**

The multimode ExcalibreWP batten range combines the reliability and energy-efficiency of a high performance LED array with a robust, tough IP65 IK10 weatherproof shell to offer a long-term solution for harsh outdoor, wet or dusty environments.

The practical hinged cover design offers ease of installation and hassle-free maintenance whilst the externally-mounted remote box allows for the emergency lamp to be installed in freezing -30°C applications such as freezer rooms and laboratories.



Available as:



SYNTHIUM[™] nanotechnology is an advanced environmentally-sustainable energy development that offers extended battery life, low cost of ownership, enhanced performance and improved safety.



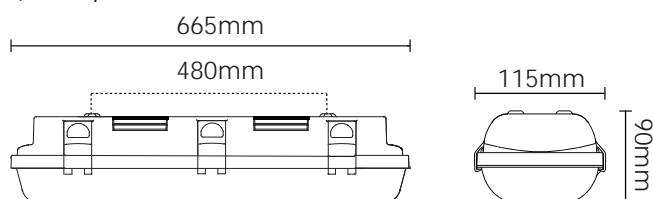
Technical Specifications

Item	Part Number	EMS-BATT0620WP/RB
	Description	20W Tri-Colour LED 600mm Multimode IP65 IK10 Weatherproof Emergency Batten c/w <i>Synthium™</i> Battery, separate Remote Box
Input	Voltage & Frequency	230VAC ; 50Hz
	Installation	Large terminal block, 20mm ² cable entry, 2m wiring loom between both enclosures
Output	Light Source	20W 2500lm Tri-Colour LED Array (4000K, 5000K, 6000K)
	Mode of Operation	Multimode - Maintained / Non-Maintained
	Power Consumption	22W (Maintained), 3W (Non-Maintained)
	Emergency Duration	> 120 minutes
Controls	Charger	16hr intelligent 3-stage charger with <i>Synthium™</i> battery
	Protection	Overcharge, low voltage disconnect, overcurrent, short circuit
	Testing Facility	Manual test switch
	Indicators	Battery charging green LED
Physical	Construction	Diffuser - high transmission opal polycarbonate, chassis - polycarbonate
	Mounting	Surface mounted - ceiling / wall
	Dimensions L x W x H	665mm x 115mm x 90mm
	IP / IK Rating	IP65 / IK10
	Weight	2.0kg
	Warranty	3 years
Environment	Operating Temperature	-30°C to 40°C
	Relative Humidity	0 to 95%
Compliance	Standards	RCM / EMC, AS/NZS 2293, AS/NZS 60598.1, SAA Approval SAA140984
	AS/NZS 2293 Classification	C0 D63, C90 D40
Accessories	STAR™ Self-Test and Reporting	P/N: EMS-BATT0620WP/RB/ST
	DALI-compatible	P/N: EMS-BATT0620WP/RB/DL
	SYNECTIX™ RF Wireless	P/N: EMS-BATT0620WP/RB/RF
	Replacement Battery	P/N: BAT-BATTWP: <i>Synthium™</i> LiFePO ₄

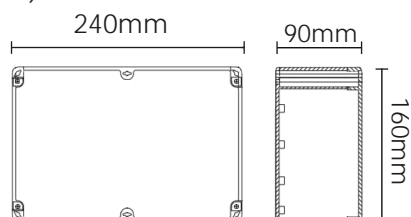
NOTE: Product specifications subject to change without prior notice due to ongoing product improvement policy and changes to industry standards.

Dimensions

1) Lamp



2) Remote Box



Spacing Table

SPACING TABLE	MOUNTING HEIGHT (m)									
NATA Classification	2.1	2.4	2.7	3.0	4.0	5.0	6.0	8.0	10.0	
EMS-BATT0620WP C0 - D63	11.5	13.2	14.8	16.5	22.1	21.2	22.1	23.0	23.0	
C90 - D40	11.5	13.2	14.8	16.5	20.1	21.3	22.1	23.0	23.1	

Distributed By:

