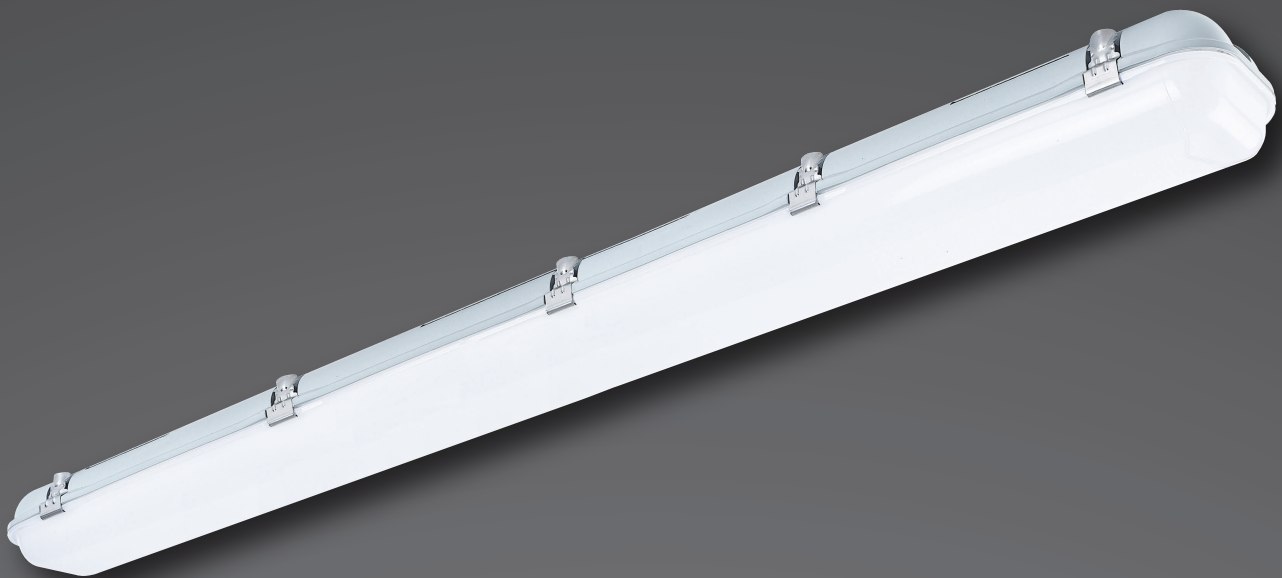
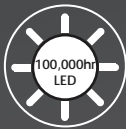
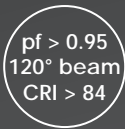


EXCALIBRE WP

**40W LED WEATHERPROOF IP65 IK10
LINEAR BATTEN LIGHT**

The ExcalibreWP batten range combines the reliability and energy-efficiency of a high performance LED array with a robust, tough IP65 IK10 weatherproof shell to offer a long term solution for harsh outdoor, wet or dusty environments.

The practical hinged cover design offers ease of installation and hassle-free maintenance and, when integrated with the optional microwave dimming motion sensor, it can save end-users up to 70% in energy costs, making ExcalibreWP perfect for car parks, stairwells, warehouses and outdoor paths.



Also available as:

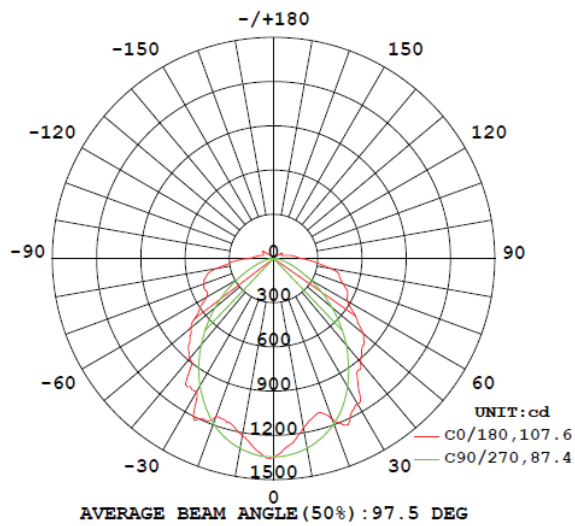


Technical Specifications

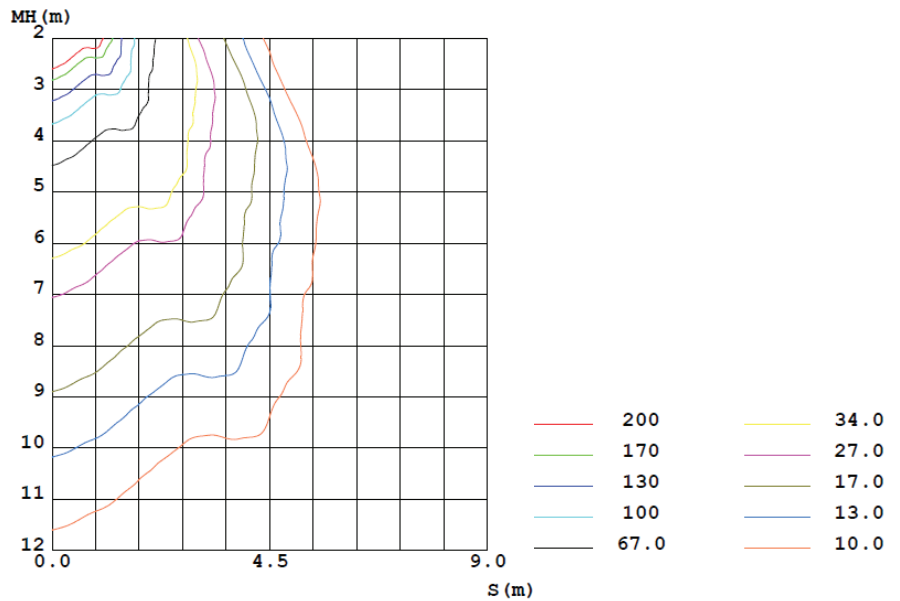
Item	Part Number	STD-BATT1240WP
	Description	40W Tri-Colour LED 1200mm IP65 Weatherproof Batten Light
Input	Voltage & Frequency	230VAC ; 50Hz
	Installation	Large terminal block, 20mm ² cable entry
Output	Light Source	40W 5000lm Tri-Colour LED Array (4000K, 5000K, 6000K)
	Mode of Operation	Mains switchable, dimmable
	Power Consumption	40W
Physical	Construction	Diffuser - high transmission opal polycarbonate, chassis - polycarbonate
	Mounting	Surface mounted - ceiling / wall
	Dimensions L x W x H	1265mm x 115mm x 90mm
	IP / IK Rating	IP65 / IK10
	Weight	2.5kg
	Warranty	5 years
Environment	Operating Temperature	-20° to 50°C
	Relative Humidity	0 to 95%
Compliance	Standards	SAA Approval SAA140997, RCM / EMC, AS/NZS 60598.1
Accessories	Microwave Dimming Sensor	P/N: STD-BATT1240WP/MWS
	DALI-compatible	P/N: STD-BATT1240WP/DL

NOTE: Product specifications subject to change without prior notice due to ongoing product improvement policy and changes to industry standards.

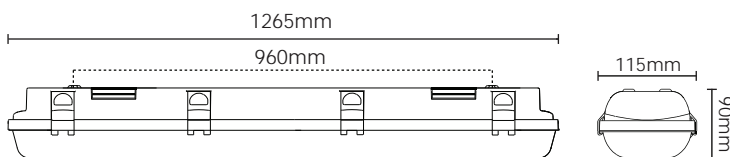
Luminous Intensity Distribution Diagram



C0 Plane Isolux Diagram



Dimensions



Distributed By:

