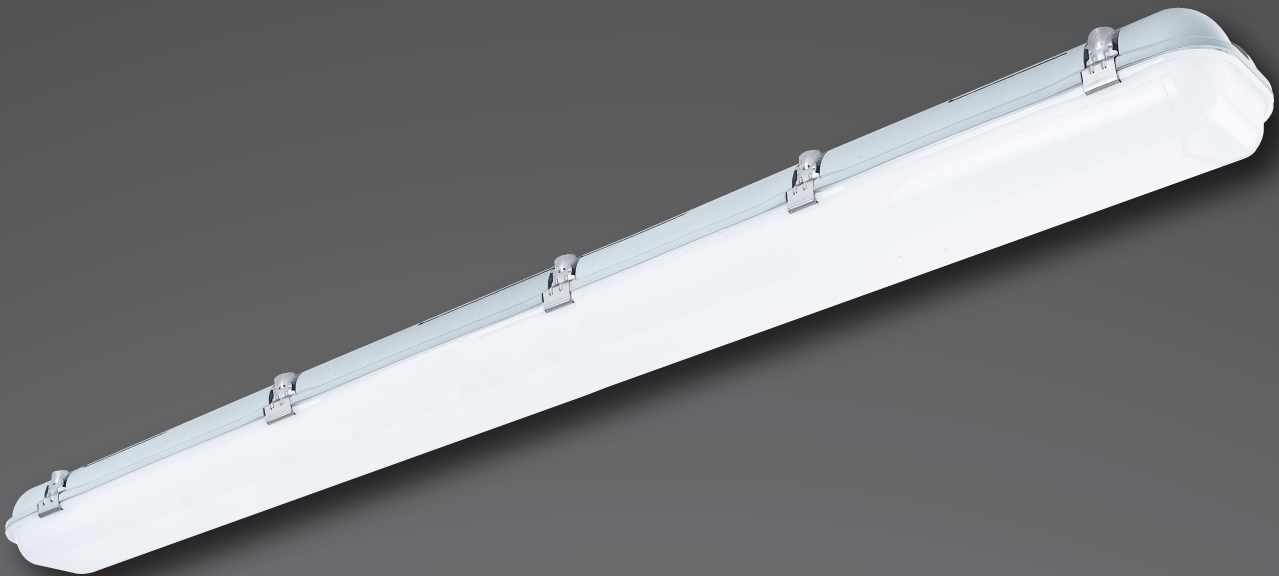


EXCALIBRE^{TEMP}

**LED WEATHERPROOF IP65 IK10 BATTEN
TEMPORARY EMERGENCY LIGHT**

The multimode ExcalibreWP batten range combines the reliability and energy-efficiency of a high performance LED array with a robust, tough IP65 IK10 weatherproof shell to offer a long-term solution for harsh outdoor, wet or dusty environments.

The practical hinged cover design offers ease of installation and hassle-free maintenance and, when integrated with the optional microwave dimming motion sensor, it can save end-users up to 70% in energy costs, making ExcalibreWP perfect for car parks, stairwells, warehouses and other outdoor emergency escape paths.



SYNTHIUM[™] nanotechnology is an advanced environmentally-sustainable energy development that offers extended battery life, low cost of ownership, enhanced performance and improved safety.

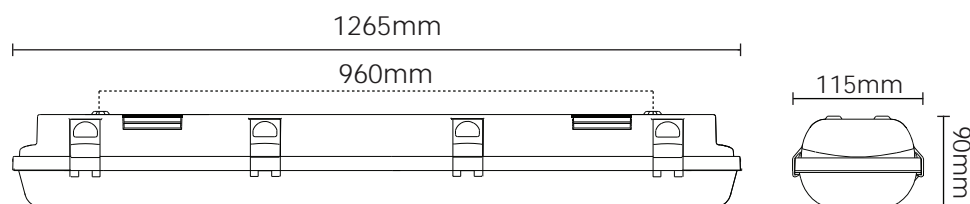


Technical Specifications

Item	Part Number	TMP-BATT4WP
	Description	40W Tri-Colour LED 1200mm Multimode IP65 Weatherproof Temporary Emergency Batten c/w Advanced <i>Synthium</i> ™ Battery
Input	Voltage & Frequency	230VAC ; 50Hz
	Installation	Large terminal block, 20mm ² cable entry
Output	Light Source	40W 5000lm Tri-Colour LED Array (4000K, 5000K, 6000K)
	Mode of Operation	Multimode - Maintained / Non-Maintained
	Power Consumption	45W (Maintained), 4W (Non-Maintained)
	Emergency Duration	> 120 minutes
Controls	Charger	16hr intelligent 3-stage charger with Advanced <i>Synthium</i> ™ battery
	Protection	Overcharge, low voltage disconnect, overcurrent, short circuit
	Testing Facility	Manual test switch
	Indicators	Battery charging green LED
Physical	Construction	Diffuser - high transmission opal polycarbonate, chassis - polycarbonate
	Mounting	Surface mounted - ceiling / wall
	Dimensions L x W x H	1265mm x 115mm x 90mm
	IP / IK Rating	IP65 / IK10
	Weight	2.5kg
	Warranty	3 years
Environment	Operating Temperature	1° to 40°C
	Relative Humidity	0 to 95%
Compliance	Standards	RCM / EMC, AS/NZS 2293, AS/NZS 60598.1
	AS/NZS 2293 Classification	C0 D80, C90 D50
Accessories	Replacement Battery	P/N: BAT-BATTWP: <i>Synthium</i> ™ LiFePO ₄

NOTE: Product specifications subject to change without prior notice due to ongoing product improvement policy and changes to industry standards.

Dimensions



AS/NZS 2293.1:2018 Spacing Table

SPACING TABLE		MOUNTING HEIGHT (m)									
NATA Classification		2.1	2.4	2.7	3.0	4.0	5.0	6.0	8.0	10.0	
TMP-BATT4WP	C0 - D80	11.5	13.2	14.8	16.5	21.8	23.1	24.1	25.4	25.8	
	C90 - D50	11.5	13.2	14.8	16.5	22.0	27.5	28.9	30.9	32.1	

Distributed By:

